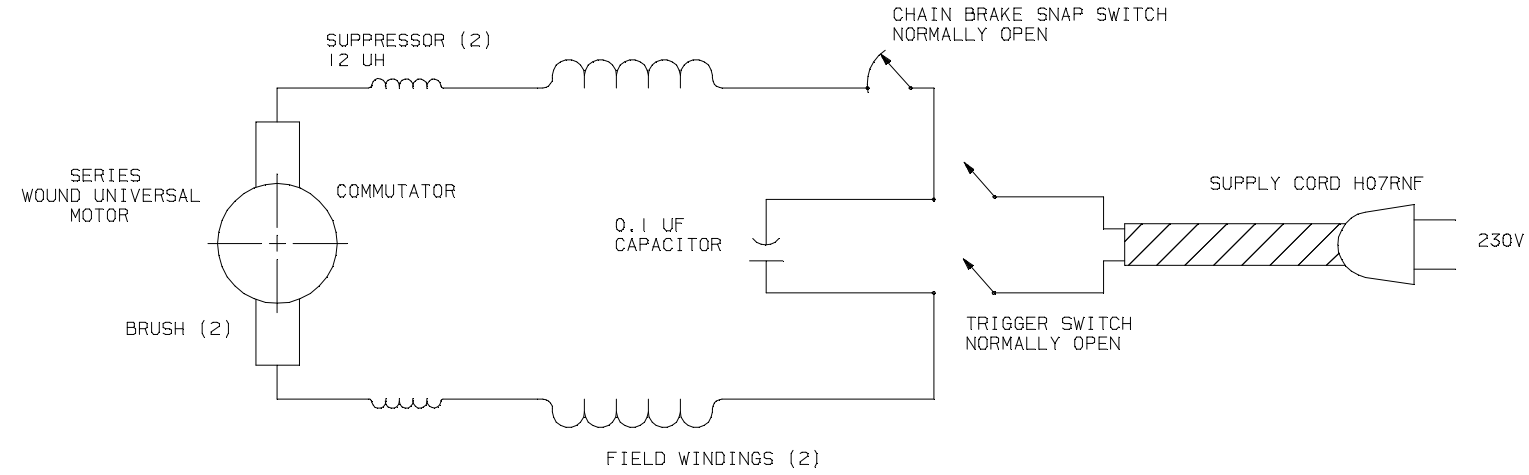


- NOTES
1. MOUNT NAMEPLATE DECAL (ITEM 1) APPROXIMATELY 1.00 FROM PARTING LINE OF HOUSING (ITEM 2) WITH UPPER EDGE CENTERED BETWEEN BOSSES. SURFACE MUST BE SMOOTH AND FREE OF BUBBLES.
 2. TORQUE TO 17-22 INCH-POUNDS.
 3. TORQUE TO 8-15 INCH-POUNDS.
 5. SCREW AND BLOCK IN ADJUSTING PLATE ASSEMBLY (ITEM 17) MUST OPERATE FREELY OVER THE FULL LENGTH OF TRAVEL. OPERATING TORQUE: 4 INCH-POUNDS MAXIMUM.
 6. TORQUE TO 24-29 INCH-POUNDS.
 7. TORQUE TO 40 INCH-POUNDS.
 8. CENTRALLY POSITION DECAL (ITEM 24) IN RECESS OF COVER (ITEM 23). SURFACE TO BE SMOOTH AND FREE OF BUBBLES.
 9. TORQUE TO 17-20 INCH-POUNDS.
 11. TORQUE TO 14-18 INCH-POUNDS.
 12. TORQUE TO 2-3 INCH POUNDS.
 13. TORQUE TO 12-16 INCH-POUNDS.
 14. PRESS ROLLER BEARING (ITEM 4) FLUSH TO .02 BELOW SURFACE WITH STAMPED IDENTIFICATION SIDE OUT.
 15. FIELD LEAD WITH TERMINAL (PART OF ITEM 5) CONNECTS TO MICRO SWITCH IN BRAKE ASSEMBLY (ITEM 10).
 16. A 10-14 POUND PULLING FORCE MUST ACTIVATE (UNLATCH) CHAIN BRAKE WHEN APPLIED SLOWLY AT 45° FROM THE MID-POINT OF GUARD (ITEM 10) AS SHOWN BY ARROWS.
 17. DIELECTRIC TEST (CENELEC HD 400.1) FOR DOUBLE INSULATED TOOLS: 2500V, 50 HZ FOR THREE SECONDS.
 18. NO LOAD OPERATION @ 230V, 50 HZ: UNIT TO RUN SMOOTHLY AND UNIFORMLY WITHOUT EXCESSIVE ARCING OR NOISE. CURRENT: 2.00-2.50 AMPS SPROCKET SPEED: 5700-6300 RPM
 19. WEDGE POWER CORD ON ASSEMBLED SAW INTO V-NOTCH ON CORRUGATED FILLER (ITEM 36).
 20. GUIDE BAR (ITEM 37) MAY INCLUDE SHIPPING SLEEVE FROM VENDOR.
 22. CENTRALLY POSITION DECAL (ITEM 42) IN RECESS OF SPROCKET COVER (ITEM 41). SURFACE TO BE SMOOTH AND FREE OF BUBBLES.
 23. FIELD OR CAPACITOR LEADS MAY BE INSERTED IN EITHER SET OF PUSH-IN TERMINALS. LEADS MUST BE SECURELY TRAPPED IN TERMINALS TO PREVENT PULL OUT.
 24. RUBBER STAMP DATE CODE FOLLOWED BY PRODUCTION LINE NUMBER AND SHIFT NUMBER IF APPLICABLE ON EITHER END OF CARTON (ITEM 39). EXAMPLE: PW-17-1-2, SEPTEMBER 17, 1993, PRODUCTION LINE ONE AND SHIFT TWO. STAMP MUST NOT COVER ANY OTHER PRINTING.
 27. HOT STAMP FOIL (ITEMS 53 & 54) ONTO SIDE COVER (ITEM 23), SEE CHART FOR ARTWORK.
 28. TEST HOT STAMPING PER QA-221-040.
 29. TAPE BOTTOM OF CARTON (ITEM 39) WITH PACKAGING TAPE (ITEM 56). AFTER ALL ITEMS ARE PLACED IN CARTON, TAPE TOP OF CARTON WITH PACKAGING TAPE.

REV	DESCRIPTION	CHECKED	APPROVED
AR	E35112-2 MG 10-11-01 REDRAWN & REVISED: IT. 15 WAS 079084-02, IT. 23 WAS 079091-04, QTY IT. 26 WAS 5 & ADDED IT. 55.	M.G. 10-11-01	M.H. 10-11-01
AS	E36206-5 MM 7-17-02 ITEM 27 WAS 076905. ITEM 14 SHOW NEW SHAFT INSERT DESIGN.	T.M. 7-17-02	D.S. 7-17-02
AT	E36696-6 MG 9-12-02 ITEM 21 WAS 075752.	T.M. 9-12-02	M.H. 9-12-02
AU	E37779-4 MG 4-28-03 ITEM 26 WAS 059046.	T.M. 4-28-03	M.H. 4-28-03
AV	E39395-1 MM 4-22-04 ITEM 39 WAS 100269-01. ADDED ITEM 56.	T.M. 4-22-04	T.B. 4-22-04

PART NO.	DESCRIPTION	ITEM
1	100274-01 DECAL, NAMEPLATE	1
1	076014 HOUSING, MOTOR	2
1	076105 DISC, THRUST	3
1	075499 BEARING, ROLLER	4
1	100930-02 FIELD, 230V, 1450W	5
1	029903 BALL, STEEL	6
X	068753 LUBRICANT, GEAR, BR2S	7
1	101043-01 ARMATURE, 230V	8
1	100162-01 SCREW, FLAT HD TPG, 6-20 X 1.50	9
1	100259-01 ASSEMBLY, CHAIN BRAKE	10
2	100279-01 BOLT, HEX HD, .250-20 X 1.50	13
1	097973-11 HOUSING, GEAR, BLACK	14
1	107512-01 ASSEMBLY, CAP AND BULB	15
1	079086-02 RESERVOIR, OIL	16
1	077115 PLATE, ASSY, ADJUSTING	17
1	076906 SCREW, TAP, FLAT HD, PR	18
2	NPC-4C NUT, HEX, .250-20	19
1	075676 BEARING, ROLLER, SPROCKET	20
1	107713-01 GEAR, SPROCKET	21
1	077143 SUPPORT, SPROCKET	22
1	077399-02 COVER, SIDE, BLACK	23
6	107708-01 SCREW, PPH B 8-18 X .88	26
1	108120 01 RING, E	27
1	059606 GEAR, DRIVE, IIT, 20DP	28
4	100161-01 SCREW, PPH, TPG, 10-16 X 1.88	29
1	075253 SWITCH, LOCK-OFF	30
2	076009 SCREW	31
1	075241 CLAMP, CORD	32
1	077526 CORD, MOLDED	33
1	075202 CAPACITOR, SUPPRESSION	34
1	102891-01 MANUAL, OWNER'S	35
1	100272-01 FILLER, CORRUGATED	36
1	097570-01 BAR, GUIDE, 14" SYMM.	37
1	108911-01 CARTON, 100271-01	39
1	091374-02 CHAIN, SAW	43
1	079963-04 SCABBARD	44
1	101987-01 DECLARATION, CONFORMITY, EC	50
1	079417-03 WRENCH, HEX	52
4.95	103839-01 FOIL, ORANGE 0.75"	53
4.95	103839-03 FOIL, WHITE 1.75"	54
1	106810-01 COVER, SPROCKET	55
3 FT.	RD13000201 TAPE, 2" CLEAR PACKAGING	56

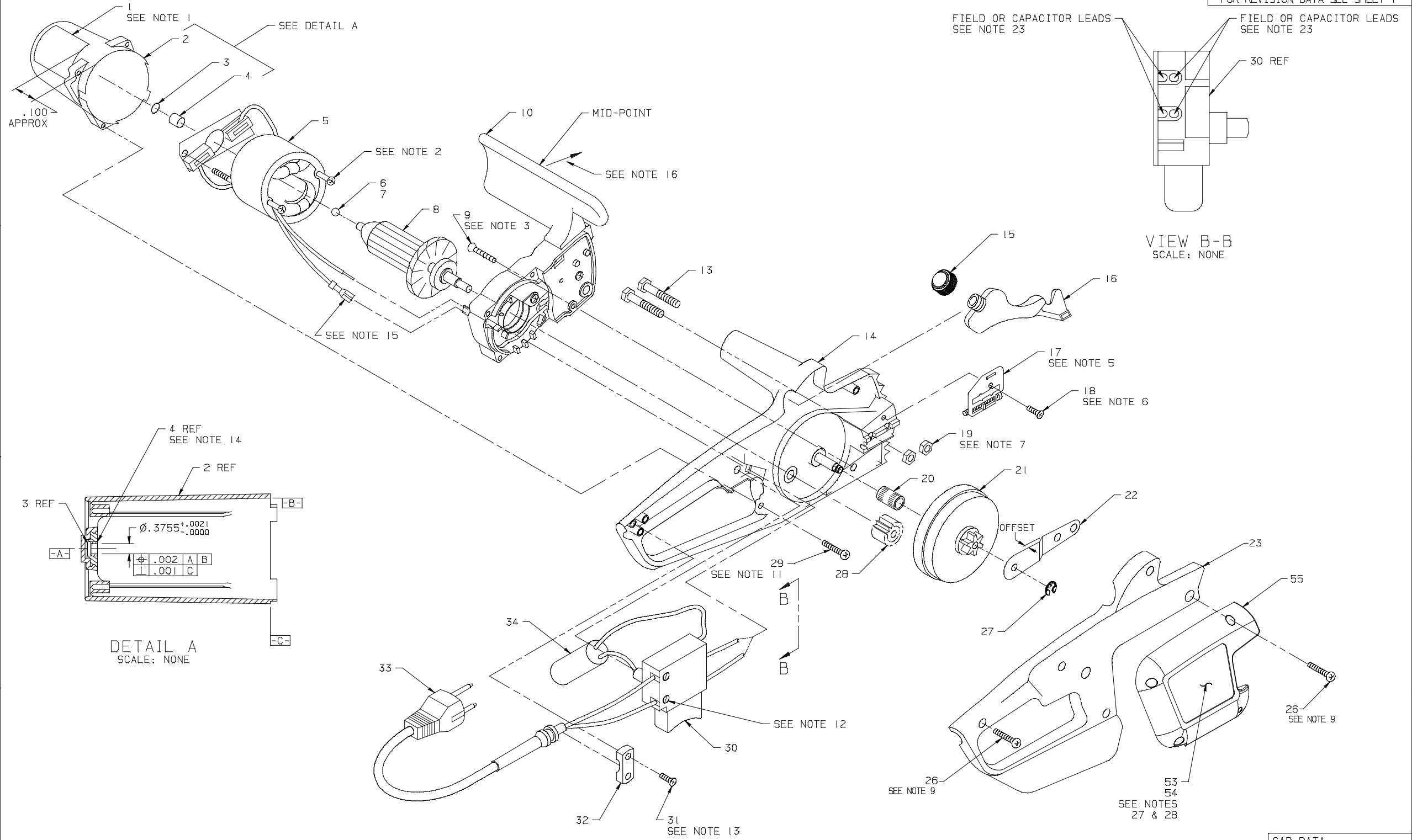


CAD DATA for ref only
 anvil
 level 10 format, notes & chart
 level 15 pictorial

DRAWN J. WALKER DATE 9-17-92 CHECKED T. MATTHEWS DATE 9-30-92 APPROVED R. SHYMKUS DATE 10-1-92	DESA CORPORATE HEADQUARTERS BOWLING GREEN, KY. TITLE SAW, CHAIN, 230V CHAIN BRAKE
TOLERANCE UNLESS OTHERWISE SPECIFIED ANGULAR FINISH 2 PLACE DECIMAL 3 PLACE DECIMAL REMOVE BURRS & BREAK SHARP EDGES	SIZE DWG Dwg EL-4 SCALE NONE SHEET 1 OF 3

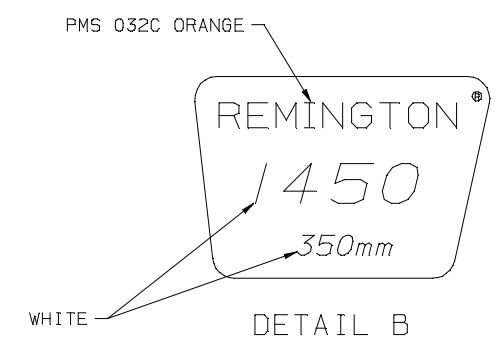
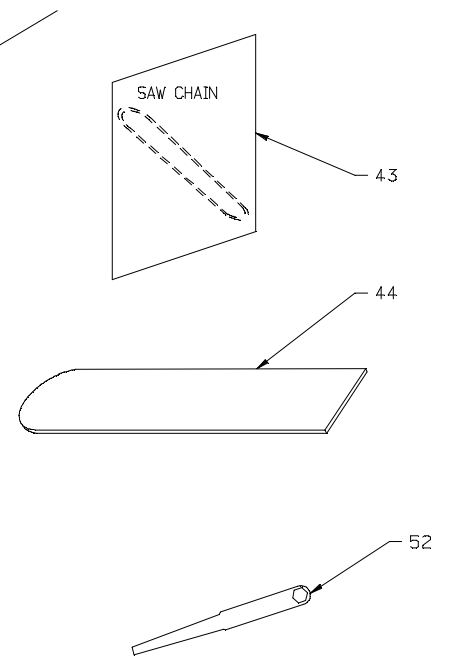
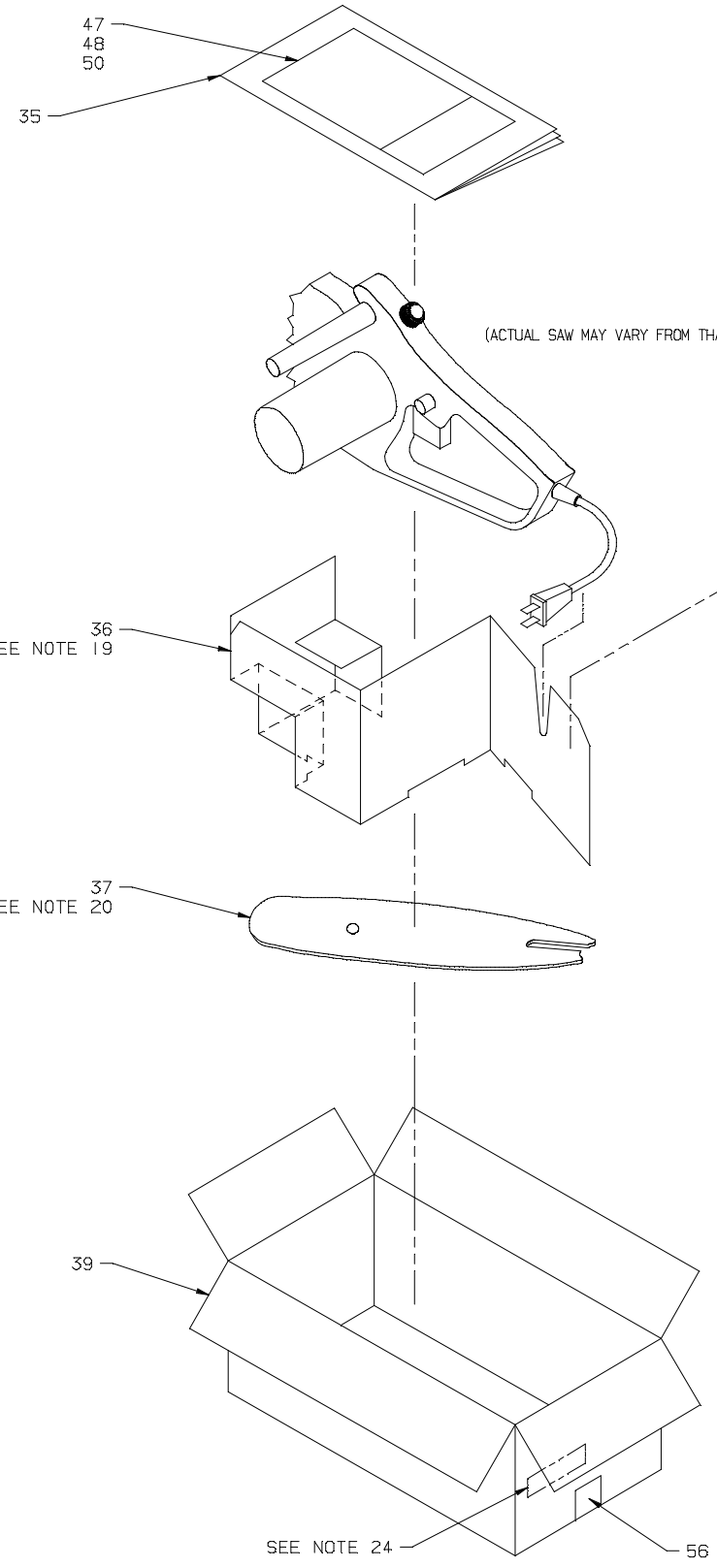
100271-01	NL, ENG, GR & FR	14 INCH	REMINGTON	"A"
PART NO.	LANGUAGE	GUIDE BAR LENGTH	BRAND	HOT STAMP DETAIL

CHART



CAD DATA
 for ref only
 anvil
 level 20 format
 level 25 pictorial

SIZE	DWG	REV
D	EL-4	AV
SCALE	NONE	SHEET 2



CAD DATA
for ref only
IBM/anvil
level 30 format
level 35 pictorial

SIZE	Dwg No	REV
SCALE	EL-4	AV
	NONE	SHEET 3